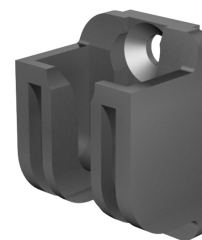


# Dual Hook FS 23mm

3-912



## Advantages

- Dual hook for flat rods with dual rollers.
- a) and b) IP65 according to DIN EN 60529 with flat external seal (optional).

## Material

a)

- **Dual hook:** PA, black

b, c)

- **Dual hook:** zinc die, zinc plated

## Remarks

Required space inside the bend 23mm

1. flat rod
2. dual rollers
3. stroke 24mm

## Dual hook

	Product number	Version	Material	Surface	Installation type	Delivery Unit
a)	208-1446.50-00000	with countersunk holes for M5	PA	black	screw-on	1 pc.
b)	208-1402.00-00000	with countersunk holes for M6	zinc die	zinc plated	screw-on	1 pc.
c)	208-1401.00-00000	with thread and threaded stubs for M6	zinc die	zinc plated	screw-on	1 pc.

