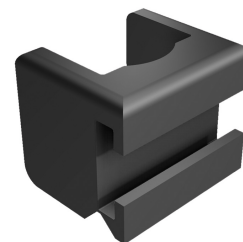


Rod Guide FS 23mm

3-910



Advantages

- For flat rods 14x3mm.
- a), b) and c): rod guide with hinge for pre-assembly onto the flat rod.
- b) and c): rod guide for OFFSET-DUO SYSTEM see product system 3-310.
- d) and e): rod guide two halves.

Material

Rod guide:

a), b) and c): PA, black

d): AISI 316

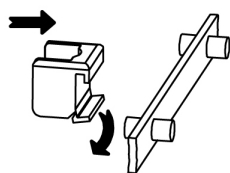
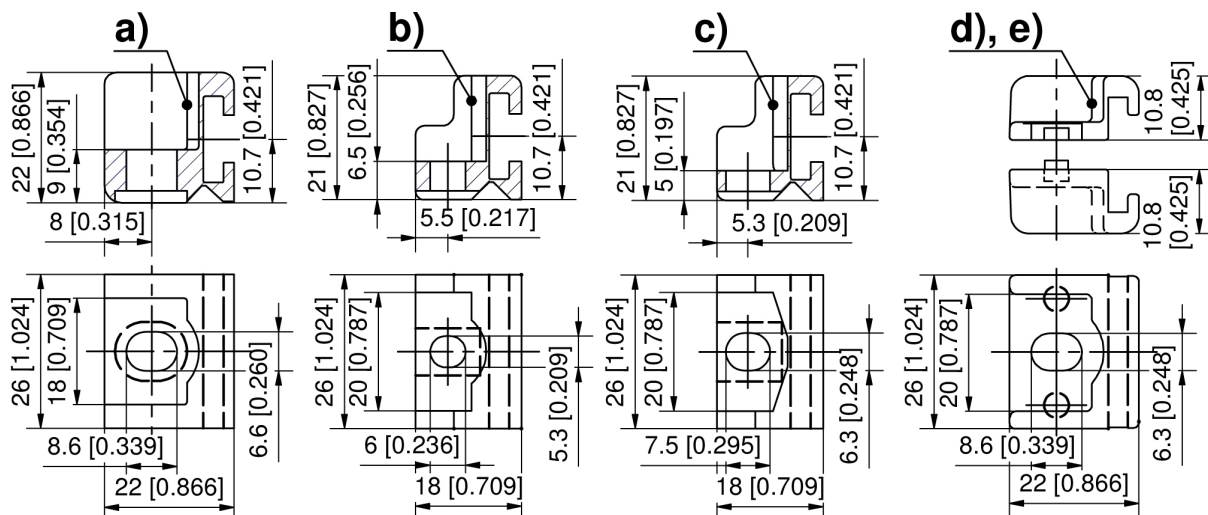
e): zinc die, black

Remarks

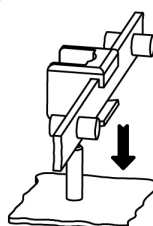
Required space inside the bend 23mm

Rod guide

	Product number	Name	Fastening type	Material	Delivery Unit
a)	208-1501.03-00000	Rod guide PA , 1-part, M6	M6	PA	1 pc.
b)	208-1509.03-00000	Rod guide PA , 1-part, M5	M5	PA	1 pc.
c)	208-1517.03-00000	Rod guide PA , 1-part, M6	M6	PA	1 pc.
d)	208-9790.00-00000	Rod guide stainless steel, 2-parts, M6	M6	stainless steel	1 pc.
e)	208-9791.00-00000	Rod guide zinc die, 2-parts, M6	M6	zinc die	1 pc.



1. Open the rod guide's living hinge downwards and position over the flat rod.



2. Assemble the flat rod guide onto the weld stud.



3. By tightening the nut the living hinge automatically and securely attaches the flat rod..