

Rod Latch RS PrB

3-132.01



Advantages

- For cutout B.
- For application within the sealed area.
- Can be equipped with escutcheon or swinghandel.
- RH / LH application through double symmetry.
- In this configuration both round rods have the same length.
- The 4 weld-studs for the rod guides are positioned exactly in the line with the center of the latch system.
- Grounding by grounding clip (optional).

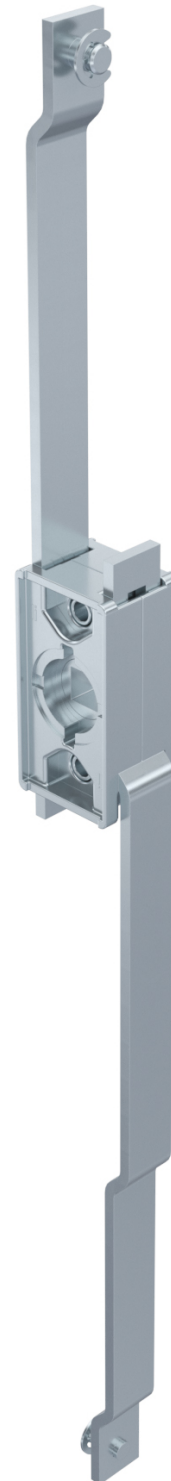
Material

- **Rod latch:** zinc die, untreated / steel, zinc plated

Remarks

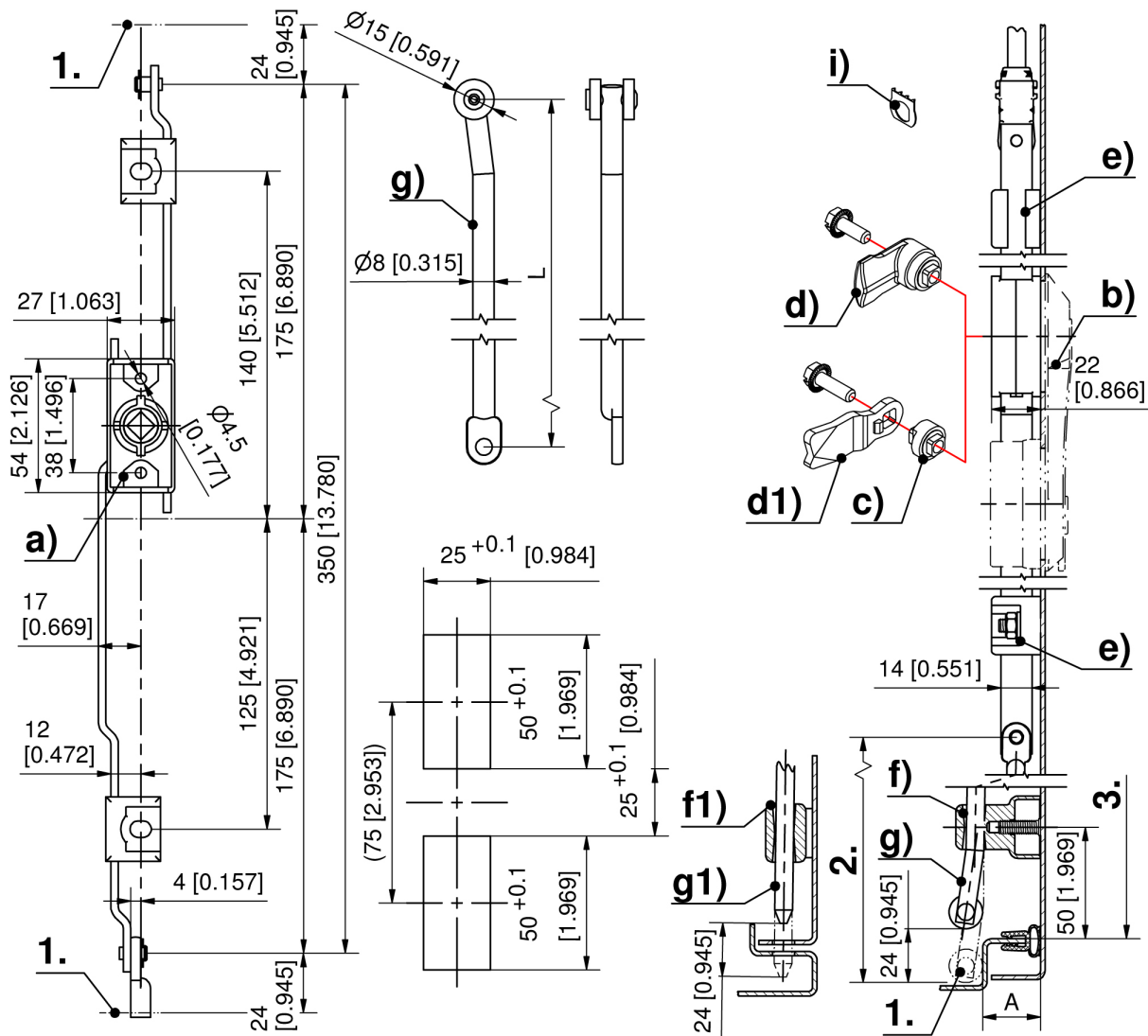
1. stroke 24mm
2. length L
3. clearance

Both flat rods of the rod latch have to be used with rod guides (e).



Rod latch

	Product number	Rod fastening	Installation type	Delivery Unit
a)	208-9016.00-00000	C-clip	screw-on	1 pc.



Formula for rods:
cutout in the door center

$$L_{2.} = \frac{\text{clearance } 3. - 10\text{mm } [0.394] \text{ (tolerance)} - \text{Rod Latch System in retracted condition } 350\text{mm } [13.780]}{2}$$