

# Rod Latch FS PrC

3-130



## Advantages

- For cutout C.
- For application within the sealed area.
- The latch can be combined with escutcheon, handles or swinghandl.
- RH / LH application through double symmetry.
- Grounding by grounding clip (optional).



## Material

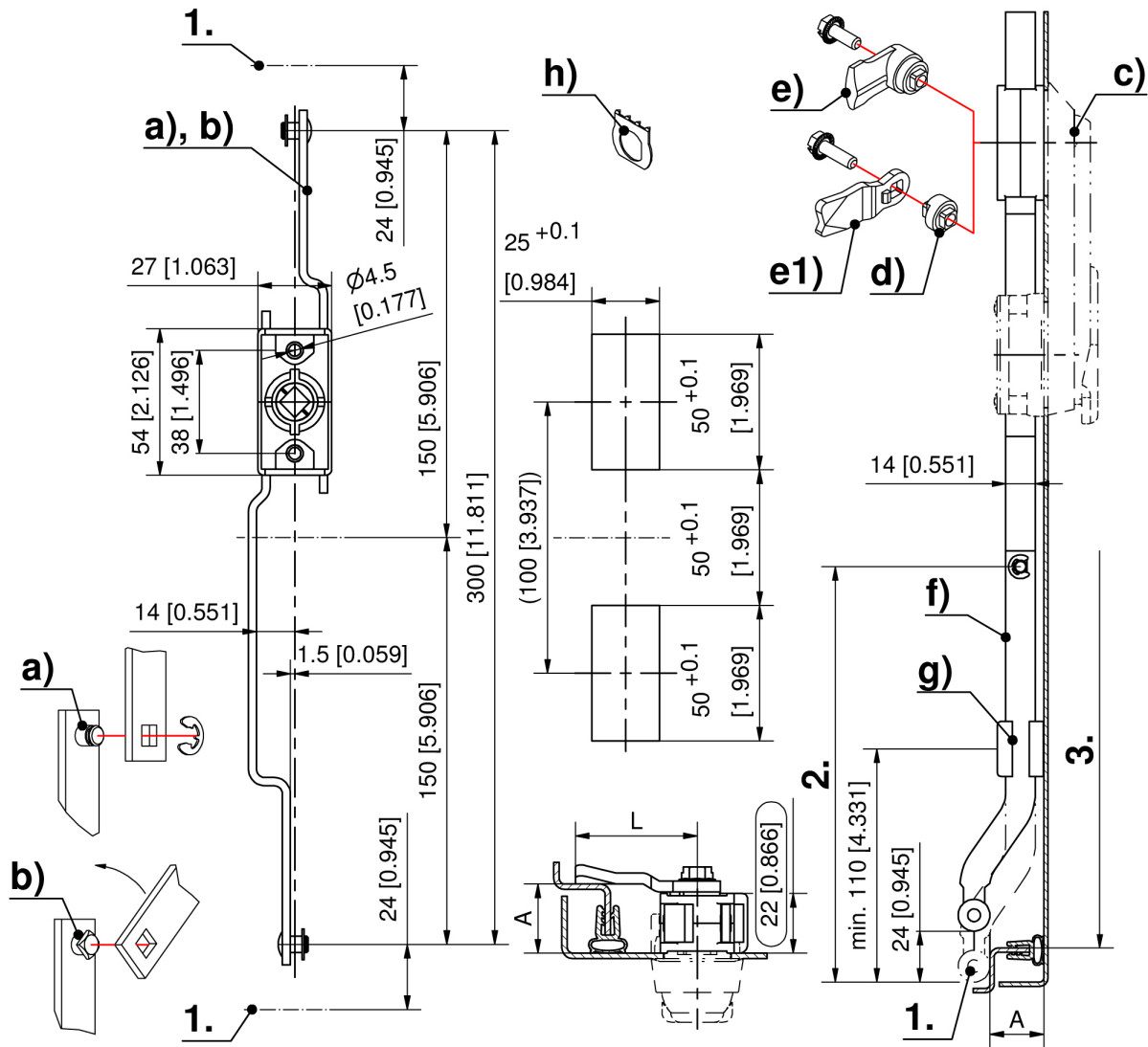
- **Housing:** zinc die, untreated or PA, black
- **Pinion:** zinc die
- **Rods:** steel, zinc plated

## Remarks

1. stroke 24mm
2. length L
3. clearance

## Rod latch

	Product number	Material	Rod fastening	Installation type	Delivery Unit
a)	208-9002.00-00000	zinc die	C-clip	screw-on	1 pc.
a)	208-9052.00-00000	PA	C-clip	screw-on	1 pc.
b)	208-9003.00-00000	zinc die	quick-fit	screw-on	1 pc.
b)	208-9053.00-00000	PA	quick-fit	screw-on	1 pc.



Formula for rods:  
cutout in the door center

$$L \text{ 2.} = \frac{\text{clearance 3.} - 10\text{mm [0.394]} (\text{tolerance}) - \text{retracted condition } 300\text{mm [11.811]}}{2 [0.079]}$$