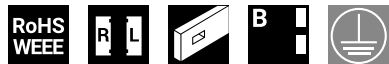


# Rod Latch FS PrB

3-075



## Advantages

- For cutout B.
- For application within the sealed area.
- The latch can be combined with escutcheons or swinghandles.
- RH / LH application through double symmetry.
- Grounding by grounding clip (optional).

## Material

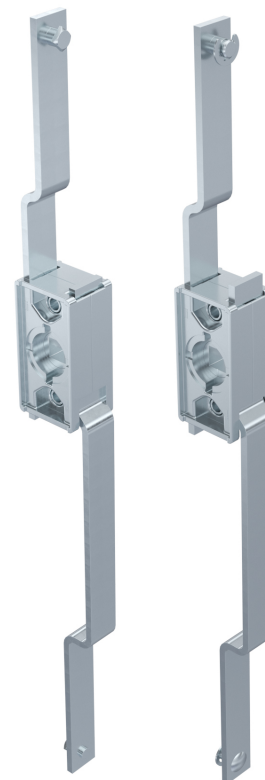
- **Housing:** zinc die, untreated
- **Pinion:** sintered metal
- **Rods:** steel, zinc plated

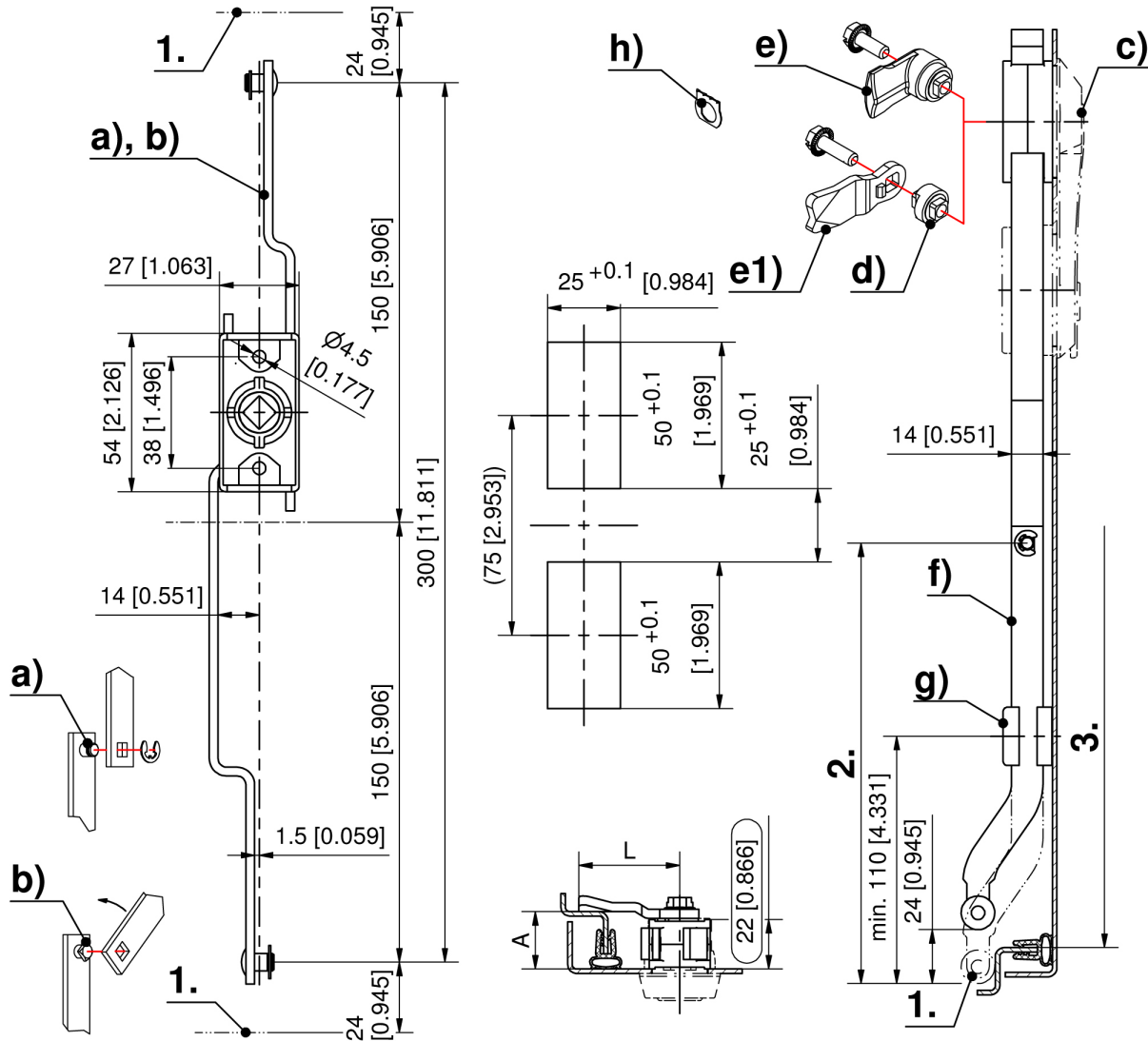
## Remarks

1. stroke 24mm
2. length L
3. clearance

## Rod latch

	Product number	Rod fastening	Installation type	Delivery Unit
a)	208-9021.00-00000	C-clip	screw-on	1 pc.
b)	208-9022.00-00000	quick-fit	screw-on	1 pc.





Formula for rods:  
cutout in the door center

$L_{2.} = \text{clearance } 3. - 10\text{mm } [0.394] \text{ (tolerance) - Rod Latch System in retracted condition } 300\text{mm } [11.811]$   
2