

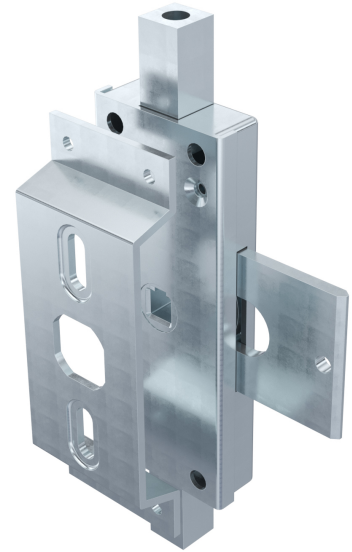
Rod Latch RS

2-340.01



Advantages

- Rod latch with 24mm stroke.
- For bending A=25mm.
- For door-thicknesses from 16 to 22mm.
- RH and LH version.
- 90° Opening angle.
- Rod connection M8 or M10.



Material

- **Rod latch, round rods and lock support:** steel, zinc plated

Remarks

For swinghandle 130mm see 2-340.

Rod latch with rod connection threaded M8

	Product number	Version	Installation type	Delivery Unit
a)	238-9003.00-00000	RH	screw-on	1 pc.
a)	238-9004.00-00000	LH	screw-on	1 pc.

Rod latch with rod connection threaded M10

	Product number	Version	Installation type	Delivery Unit
b)	238-9001.00-00000	RH	screw-on	1 pc.
b)	238-9002.00-00000	LH	screw-on	1 pc.

Round Rods with Thread

	Product number	Name	Delivery Unit
c)	201-0801.00-01000	Round rod, M8 x 1000mm	1 pc.

	Product number	Name	Delivery Unit
c1)	201-1001.00-01000	Round rod, M10 x 1000mm	1 pc.

Lock support

	Product number	Type	Material	Surface	Delivery Unit
d)	238-1501.00-00000	Lock support RH/LH, 16mm high	steel	zinc plated	1 pc.

