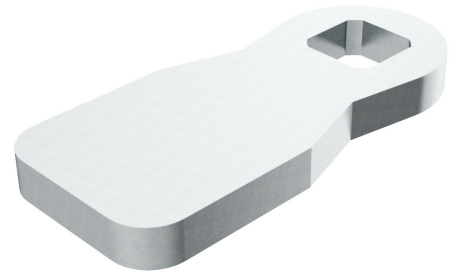


# Cams L35/45 Stainless Steel

7-105.01



## Advantages

- Cams without ramp and stop.
- **a), a1)** = straight cam (XX)
- (XX) = housing length, measured from the upper edge of the panel to the upper edge of the cam.
- **b), b1)** = negatively bent cam (upwards)
- **c), c1)** = positively bent cam (downwards)

## Material

- **Cams:** AISI 304

## Remarks

**Attention:** please note that a collision with the fixing nut of negatively bent cams installed in thick doors might be possible. The functionality has to be checked in the individual case.

### Formula for H-dimension:

for negatively bent cams K will be subtracted from (XX),

for positively bent cams K will be added to (XX)

## Cam, length 35mm, without stop

Product number	b) negatively bent K =	c) positively bent K =	Delivery Unit
100-0535.80-00022	22 mm	22 mm	1 pc.
100-0535.80-00020	20 mm	20 mm	1 pc.
100-0535.80-00018	18 mm	18 mm	1 pc.
100-0535.80-00016	16 mm	16 mm	1 pc.
100-0535.80-00014	14 mm	14 mm	1 pc.
100-0535.80-00012	12 mm	12 mm	1 pc.
100-0535.80-00010	10 mm	10 mm	1 pc.

Product number	b) negatively bent K =	c) positively bent K =	Delivery Unit
100-0535.80-00008	8 mm	8 mm	1 pc.
100-0535.80-00006	6 mm	6 mm	1 pc.
100-0535.80-00004	4 mm	4 mm	1 pc.
100-0535.80-00002	2 mm	2 mm	1 pc.
a) 100-0535.80-00000	0 mm	0 mm	1 pc.

### Cam, length 45mm, without stop

Product number	b) negatively bent K =	c) positively bent K =	Delivery Unit
100-0545.80-00022	22 mm	22 mm	1 pc.
100-0545.80-00020	20 mm	20 mm	1 pc.
100-0545.80-00018	18 mm	18 mm	1 pc.
100-0545.80-00016	16 mm	16 mm	1 pc.
100-0545.80-00014	14 mm	14 mm	1 pc.
100-0545.80-00012	12 mm	12 mm	1 pc.
100-0545.80-00010	10 mm	10 mm	1 pc.
100-0545.80-00008	8 mm	8 mm	1 pc.
100-0545.80-00006	6 mm	6 mm	1 pc.
100-0545.80-00004	4 mm	4 mm	1 pc.
100-0545.80-00002	2 mm	2 mm	1 pc.
a1) 100-0545.80-00000	0 mm	0 mm	1 pc.

