

Cable Tie Mount □9.5 and □12.7

6-070



Advantages

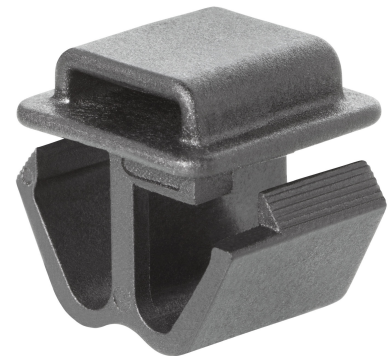
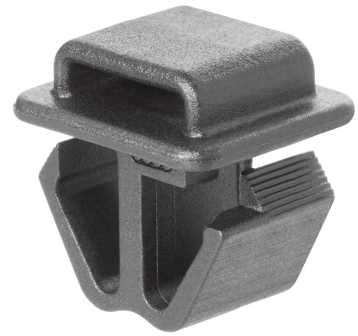
- Clips into the installation cutout □9.5 or □12.7 for simple installation.
- Tool-less installation.
- The square base (9.2 and 12.5) of the cable tie mount prevents it from turning within the installation cutout.
- Cable tie easily installed through loop.
- Audible click ensures proper secure installation.

Material

- **Cable tie mount:** PA, black

Remarks

1. cable tie



Cable Tie Mount

	Product number	Clamping range (S)	Cutout	Installation type	Delivery Unit
a)	214-0107.51-00000	1.5 mm - 2 mm	□9,5	tool-less	250 pcs.
b)	214-0107.51-10000	1.5 mm - 2 mm	□12.7	tool-less	250 pcs.

