

# 2-Point Latch PHZ with Lock Cover

6-503



## Advantages

- Ergonomically designed vertical 2-point latch.
- Magnet supported cylinder flap. (5.)
- Perfectly suited to control flat rods.
- The key inserted into the profile-cylinder opens and closes the lock according to DIN 18252.
- Closing- and opening operation 180°.
- The key is removable only in the locked position.
- Grounding with set screw DIN 914 (incl.). (6.)
- Vibration-proof according to DIN EN 61373.
- IP69K according to DIN EN 40050. (4.)



## Material

- **Housing and slider:** zinc die, zinc plated
- **Clamp:** zinc die, untreated
- **Lock cover:** zinc die, matte chrome plated
- **Seal:** CR / NBR
- **Fastening screws and set screw:** steel, zinc plated

## Remarks

(S) Door-thickness max. 3mm

- 1. stroke 28.5mm
- 2. extended
- 3. retracted
- 7. min. 280mm to pivot (hinge)

Profile half cylinders and their assembly must be ordered separately.

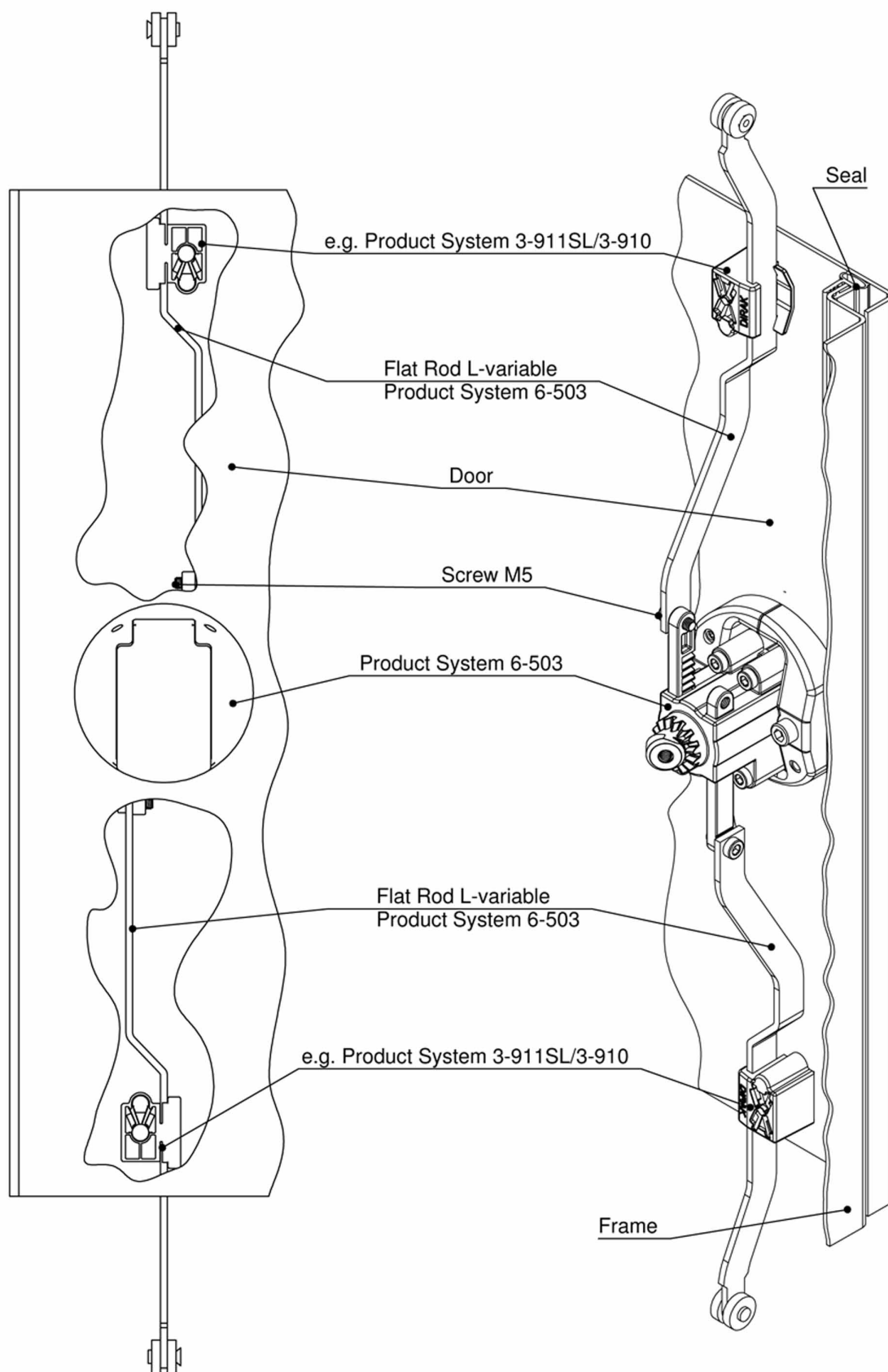
Version DIN RH (as shown). Version DIN LH on request.

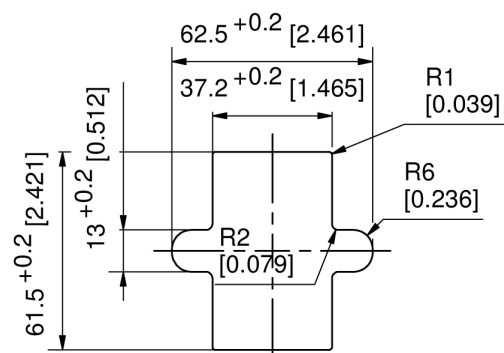
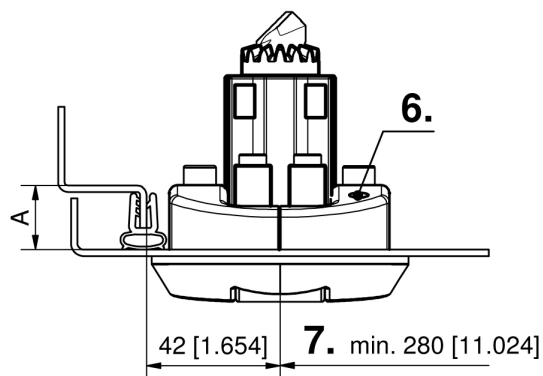
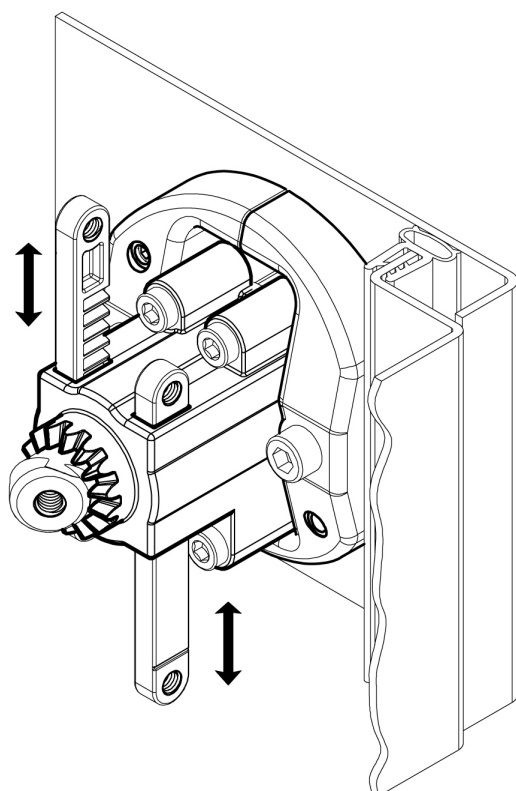
## 2-point latch with cover

Product number	Version	Multi-point latches	Installation type	Delivery Unit
448-9120.00-00000	for flat rods	Yes	screw-on	1 pc.



for 2-point latch PHZ 6-503, with lock cover and flat rods with rollers





Rod formular:

$$L = \frac{\text{clearance of the cabinet} - 10\text{mm [0.394] (tolerance)} - \mathbf{3. 41 \text{ (Rod Latch System in retraced condition)}}$$

2