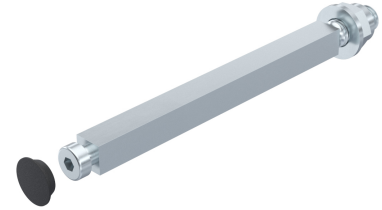


# Shafts for Heavy Duty Latches

6-280.02

RoHS  
WEEE

## Advantages

- Shaft 12 x 12 consisting off:
  1. cover
  2. fastening screw at the front M8
  3. washer and fastening nut inside M12.

## Material

- **1.:** PA, black
- **2., 3., 4. and shaft:** steel, zinc plated

## Remarks

## Shafts

Product number	Length	Heavy duty latch (without inside handle) door thickness (S)	Heavy duty latch with cam and inside handle door thickness (S)	Heavy duty latch with compression cam (without inside handle, with distance bushing) door thickness (S)	Heavy duty latch with compression cam and inside handle door thickness (S)	Delivery Unit
d) 232-9101.00-00000	82 mm	20 +/- 10				5 pcs.
d) 232-9102.00-00000	92 mm	30 +/- 10				5 pcs.
d) 232-9103.00-00000	102 mm	40 +/- 10	20 +/- 5	20 +/- 5	20 +/- 5	5 pcs.
d) 232-9104.00-00000	112 mm	50 +/- 10	30 +/- 5	30 +/- 5	30 +/- 5	5 pcs.
d) 232-9105.00-00000	122 mm	60 +/- 10	40 +/- 5	40 +/- 5	40 +/- 5	5 pcs.
d) 232-9106.00-00000	132 mm	70 +/- 10	50 +/- 5	50 +/- 5	50 +/- 5	5 pcs.

---

Product number	Length	Heavy duty latch (without inside handle) door thickness (S)	Heavy duty latch with cam and inside handle door thickness (S)	Heavy duty latch with compression cam (without inside handle, with distance bushing) door thickness (S)	Heavy duty latch with compression cam and inside handle door thickness (S)	Delivery Unit
d) 232-9107.00-00000	142 mm	80 + / - 10	60 + / - 5	60 + / - 5	60 + / - 5	5 pcs.
d) 232-9109.00-00000	162 mm	100 + / - 10	80 + / - 5	80 + / - 5	80 + / - 5	5 pcs.
d) 232-9111.00-00000	182 mm	120 + / - 10	100 + / - 5	100 + / - 5	100 + / - 5	5 pcs.

---

