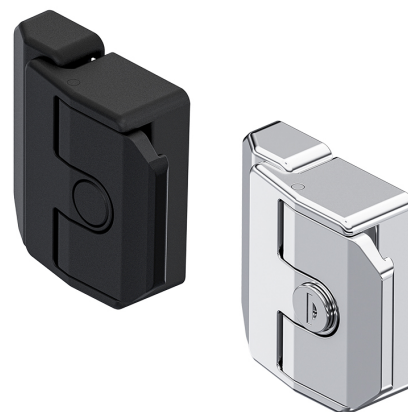


Slam Latch

6-150



Advantages

- Slam latch consists of two parts (door- and frame-part) for aluminium profiles.
- Due to oblong holes, different profile widths can also be used.
- Gently pulling the handle will disengage the slam-bolt from the frame-part.
- A gentle push will latch the door.
- Version with cylinder is supplied with 2 keys.

Material

- **Handle, door- and frame-part:** zinc die, chrome plated or black
- **Bolt:** zinc die, untreated
- **Slot nut:** steel, zinc plated

Remarks

1. 4 slot nuts M6 are included in scope of delivery
2. open
3. opened
4. close

Slam latch, zinc die, chrome plated

Product number	Latching type	Installation type	Delivery Unit
265-9606.00-00000	-	screw-on	1 pc.
265-9601.00-00000	keyed alike DIRAK 1333	screw-on	1 pc.
565-9601.00-00000	keyed alike DS200	screw-on	1 pc.
265-9603.00-00000	keyed different	screw-on	1 pc.

Slam latch, zinc die, black

Product number	Latching type	Installation type	Delivery Unit
265-9605.00-00000	-	screw-on	1 pc.
265-9602.00-00000	keyed alike DIRAK 1333	screw-on	1 pc.

Product number	Latching type	Installation type	Delivery Unit
565-9602.00-00000	keyed alike DS200	screw-on	1 pc.
265-9604.00-00000	keyed different	screw-on	1 pc.

