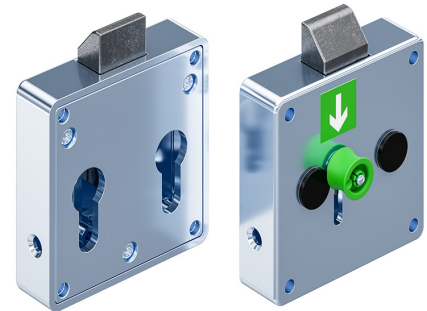


# Slam Latch for two Profile-Cylinder, with and without Internal Unlocking

6-111.01



## Advantages

- For two profile-cylinder with lengths of 40mm / 45mm length to DIN 18252.
- Opening possible by operating a profile cylinder, independent of the second cylinder.
- Lock cylinder can be adjusted to accommodate different latch mounting positions.
- Pull back of the latch bolt by rotation of the key.
- Closing is possible by self-locking of the latch bolt with free stroke.
- Variant a) with internal unlocking: by pulling the handle, the latch is retracted.
- Large, ergonomically shaped handle for optimal operation.
- Use in applications according to DIN 79008.
- Indication of unlocking direction by high-quality self-adhesive foil, long afterglow coated according to DIN 67510-4.
- Variant b): without internal unlocking.

## Material

- **Slam latch:** zinc die, zinc plated
- **Latch bolt:** spheroidal graphite, cast iron
- **Handle for internal unlocking:** PA, green

## Remarks

**Please order separately:**

profile-cylinder, lock support and lock cover

Installation with 4 carriage bolts or weld-studs M5.

1. stroke
2. handle for internal unlocking
3. plug

Shown is part number 229-9111.00-00001

## Slam Latch for Profile-Cylinder

	Product number	Variant	Installation type	Delivery Unit
a)	229-9113.00-00001	with internal unlocking	screw-on	1 pc.
b)	229-9113.00-00000	without internal unlocking	screw-on	1 pc.

