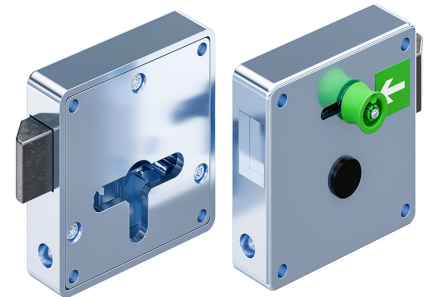


Slam Latch for Profile-Cylinder, with and without Internal Unlocking

6-111



Advantages

- For profile-cylinder with lengths of 40mm / 45mm to DIN 18252.
- RH / LH or vertical / horizontal application.
- Lock cylinder can be adjusted to accommodate different latch mounting positions.
- Pull back of the latch bolt by rotation of the key.
- Closing is possible by self-locking of the latch bolt with free stroke.
- Variant a) with internal unlocking : by pulling the handle, the latch is retracted.
- Large, ergonomically shaped handle for optimal operation.
- Use in applications according to DIN 79008.
- Indication of unlocking direction by high-quality self-adhesive foil, long afterglow coated according to DIN 67510-4.
- Variant b): without internal unlocking.

Material

- **Slam latch:** zinc die, zinc plated
- **Latch bolt:** spheroidal graphite, cast iron
- **Internal unlocking:** PA, green

Remarks

Please order separately:

profile-cylinder, lock support and lock cover

Installation with 4 carriage bolts or weld-studs M5.

1. stroke
2. handle for internal unlocking
3. plug

Shown is part number 229-9111.00-00001

Slam Latch for Profile-Cylinder

	Product number	Variant	Version	Installation type	Delivery Unit
a)	229-9111.00-00001	with internal unlocking	LH door	screw-on	1 pc.
a)	229-9112.00-00001	with internal unlocking	RH door	screw-on	1 pc.
b)	229-9111.00-00000	without internal unlocking	LH door	screw-on	1 pc.

	Product number	Variant	Version	Installation type	Delivery Unit
b)	229-9112.00-00000	without internal unlocking	RH door	screw-on	1 pc.

