

Sliding Door Latch

1-415



Advantages

- Hooked cam with free stroke.
- Version RH, hook LH.
- Version LH, hook RH.
- Opening angle of the hook 15°.

Material

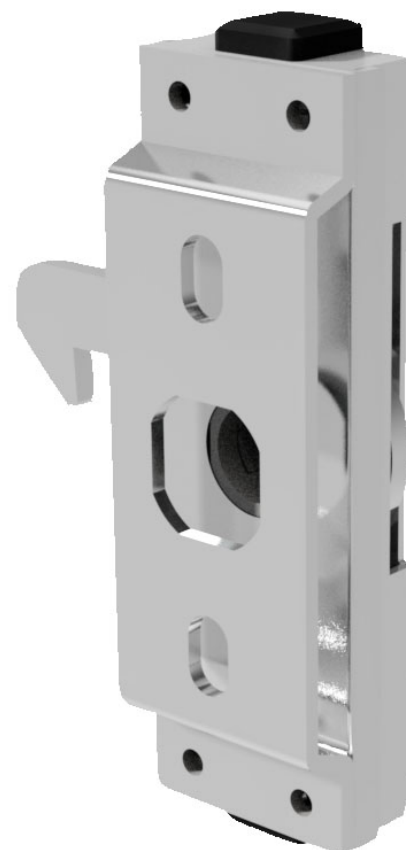
- **Sliding door latch and cam:** steel, zinc plated
- **Plug:** PE, black

Remarks

Please order separately: b) lock support

Please configure the sliding door latch with escutcheon and insert or T- and L-handle or with swinghandle.

1. example for frame cutout



Sliding door version LH, slide direction RH

Product number	H-dimension without support	H-dimension with lock support A20	H-dimension with lock support A26	Installation type	Delivery Unit
a) 235-9015.00-00000	10 mm	20 mm	26 mm	screw-on	1 pc.
a) 235-9017.00-00000	32 mm	42 mm	48 mm	screw-on	1 pc.

Sliding door version RH, slide direction LH

Product number	H-dimension without support	H-dimension with lock support A20	H-dimension with lock support A26	Installation type	Delivery Unit
a) 235-9016.00-00000	10 mm	20 mm	26 mm	screw-on	1 pc.
a) 235-9018.00-00000	32 mm	42 mm	48 mm	screw-on	1 pc.

