

DST Clamping Latch

1-072DST



Advantages

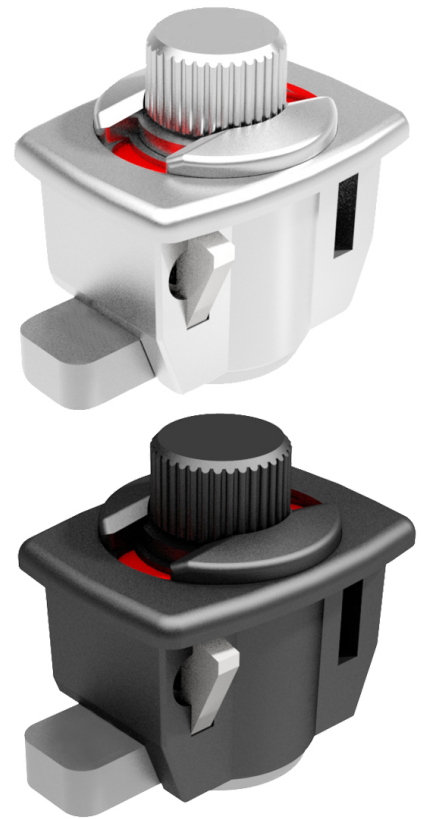
- Mini clamping latch with indicator red/green.
- The indicator stays visible and is not concealed in any fitted situation.
- ~6mm compression stroke. (1.)
- Tool-less installation.
- Hand turning knob operated.
- In open position the indicator shows "red".
- By turning the knob, the cam is put into the latched position and the "green" indicator appears. Once latched, a further turning of the knob makes the cam start its compression feature.
- RH / LH application.

Material

- **Housing, sleeve:** zinc die, matte chrome plated or black coated
- **Insert:** steel, matte chrome plated or black coated
- **Washers:** steel, zinc plated
- **Spring:** stainless steel
- **Cam and snap wedges:** sintered steel, zinc plated

Remarks

2. open, indicator red
3. cam latched, not pulled-down, indicator green
4. cam pulled-down, closed, indicator green



Clamping latch with hand turning knob

Product number	Clamping range (S)	Surface	Installation type	Delivery Unit
448-9007.00-00810	0.8 mm - 1 mm	matte chrome plated	tool-less	1 pc.
448-9007.00-01113	1.1 mm - 1.3 mm	matte chrome plated	tool-less	1 pc.
448-9007.00-01416	1.4 mm - 1.6 mm	matte chrome plated	tool-less	1 pc.
448-9014.00-00810	0.8 mm - 1 mm	black	tool-less	1 pc.
448-9014.00-01113	1.1 mm - 1.3 mm	black	tool-less	1 pc.
448-9014.00-01416	1.4 mm - 1.6 mm	black	tool-less	1 pc.

