

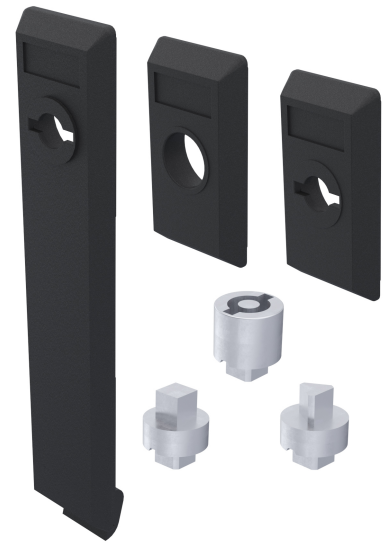
# Escutcheons

3-101



## Advantages

- Compatible with rod latches for cutout A and C.
- Cutout PrA: IP65 according to DIN EN 60529 with o-rings d).
- Cutout PrC, for use outside the seal: version b), b1) and c) with hook for easy installation.
- Variant a1) and b1): the double-bit key can only be removed in locked position.
- Grounding by grounding clip (optional).
- Recessed label field 8 x 20.
- Escutcheons and rod latch affix together in the cutout.
- Mounting screws are part of the delivery.



## Material

- **Escutcheons:** PA, black
- **Inserts:** zinc die, chrome plated

## Remarks

Door-thickness 2.0 - 2.5mm

Version a1) and b1) only for insert double bit h).

Version c) only for insert FIAT k).

1. insert
2. locking disc
3. serrated screw

Sealing kit for escutcheon **PrA** consisting of:

1 x d) = 209-9010.00-00000

Sealing kit for escutcheon **PrC** for **2mm** door-thickness consisting of:

1 x e) = 209-9008.00-00000

Sealing kit for escutcheon **PrC** for **2.5mm** door-thickness consisting of:

1 x e1) = 209-9009.00-00000

Two-part lock cover see 3-135 and 3-136.

# Escutcheons

	Product number	Name	Cutout	Installation type	Delivery Unit
a)	208-9301.00-00000	Escutcheon for triangular, square and Daimler Benz	PrA	screwed	1 pc.
a1)	208-9302.00-00000	Escutcheon for Double bit	PrA	screwed	1 pc.

	Product number	Name	Cutout	Installation type	Delivery Unit
b)	208-9501.00-00000	Escutcheon for triangular, square and Daimler Benz	PrC	screwed with hook	1 pc.
b1)	208-9502.00-00000	Escutcheon for Double bit	PrC	screwed with hook	1 pc.
c)	208-9503.00-00000	Escutcheon, FIAT Type	PrC	screwed with hook	1 pc.

## Inserts

	Product number	Insert	Delivery Unit
f)	208-9201.00-00000	Square 6mm	1 pc.
f1)	208-9202.00-00000	Square 7mm	1 pc.
f2)	208-9203.00-00000	Square 8mm	1 pc.
g)	208-9204.00-00000	Triangular 7mm	1 pc.
g1)	208-9205.00-00000	Triangular 8mm	1 pc.
g2)	208-9217.00-00000	Triangular 6.5mm CNOMO	1 pc.
h)	208-9210.00-00000	Double bit 3mm pin	1 pc.
h1)	208-9207.00-00000	Double bit 5mm pin	1 pc.
h2)	208-9206.00-00000	Double bit 3mm with stainless steel core	1 pc.
i)	208-9212.00-00000	Square socket 6mm	1 pc.
j)	208-9208.00-00000	Daimler Benz type	1 pc.
k)	208-9209.00-00000	FIAT type	1 pc.

