

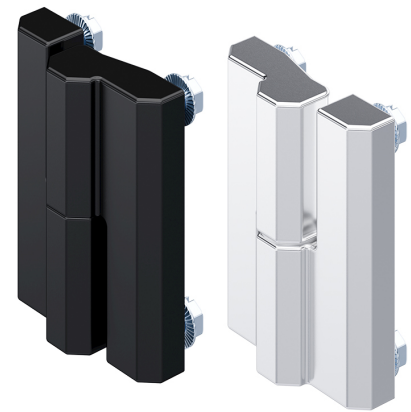
Hinge Pr01 160°

4-346



Advantages

- For nested doors.
- Hinge visible.
- Lift-off.
- RH and LH version
- 160° Opening angle.
- The fitting screws are concealed.
- The 35mm screw-distance allows for easier fitting.



Material

- **Hinge-parts:** zinc die, glossy chrome plated or black
- **Pin:** stainless steel
- **Spacer:** Teflon, black or white

Remarks

Spacer **1.** and 4 screws M5x8 with under head serrations **2.** are included.

Hinge, zinc die

Product number	Surface	Version	Pin version	Installation type	Delivery Unit
217-9507.00-00000	glossy chrome plated	RH version	pressed in	screw-on	10 pcs.
217-9508.00-00000	glossy chrome plated	LH version	pressed in	screw-on	10 pcs.
217-9509.00-00000	black	RH version	pressed in	screw-on	10 pcs.
217-9510.00-00000	black	LH version	pressed in	screw-on	10 pcs.

