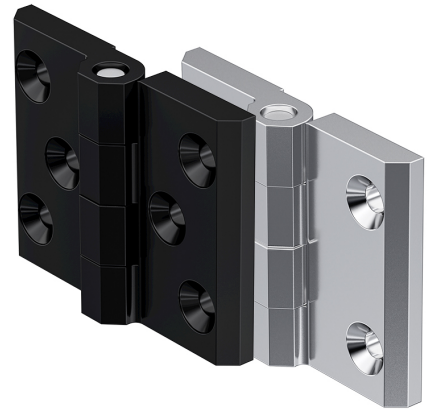


Hinge 76x60 Pr01 270°

4-272



Advantages

- Screw-on hinge.
- For nested doors.
- Hinge visible.
- RH / LH application.
- 270° Opening angle.
- Allowing application around corner.

Material

- **Hinge halves:** zinc die, blasted chrome plated or black
- **Pin:** stainless steel

Remarks

Combination of versions on request.

Hinge, zinc die

Product number	Version	Surface	Pin version	Installation type	Delivery Unit
a) 218-9205.00-00000	for countersunk screws M6 with 4 holes	blasted chrome plated	pressed in	screw-on	10 pcs.
a) 218-9206.00-00000	for countersunk screws M6 with 4 holes	black	pressed in	screw-on	10 pcs.
b) 218-9207.00-00000	for countersunk screws M6 with 6 holes	blasted chrome plated	pressed in	screw-on	10 pcs.
b) 218-9208.00-00000	for countersunk screws M6 with 6 holes	black	pressed in	screw-on	10 pcs.

