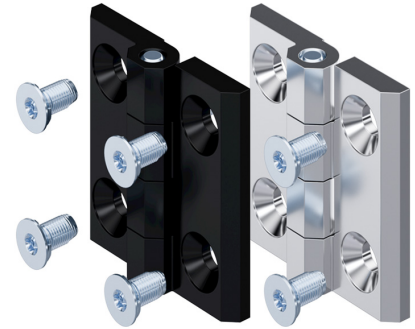


Hinge 50x50 Pr01 180° with Grounding Countersunk Screw

4-260.01



Advantages

- Grounding countersunk screw according to DIN 7500.
- According to DIN EN 61439-1 (VDE 0660-600-1):2012-06, EN 61439-1:2011.
- For nested doors.
- Hinge visible.
- RH / LH application.
- 180° Opening angle.

Material

- **Hinge halves:** zinc die, blasted chrome plated or black
- **Pins:** AISI 303
- **Spring:** spring steel
- **Countersunk screw:** steel, zinc plated

Remarks

Other dimensions see product system 4-260.

(1.) Information about the grounding countersunk screw see product system 6-044.

Hinge with grounding countersunk screw M6

Product number	Version	Surface	Pin version	Installation type	Delivery Unit
218-9103.00-00002	with countersunk holes for M6	blasted chrome plated	pressed in	screw-on	10 pcs.
218-9104.00-00002	with countersunk holes for M6	black	pressed in	screw-on	10 pcs.

