

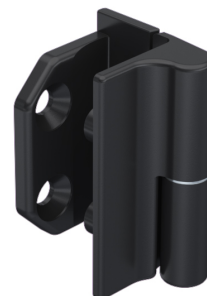
Hinge Pr05 180°

4-183



Advantages

- For surface mounted doors for adjacent cabinets.
- Door is lift-off.
- Door-bending 25mm.
- RH and LH version.
- 180° Opening angle.
- With M6 threaded stubs for fastening from inside, or Ø6.4mm countersunk holes for fastening from outside.
- The optional notch in the bending (dimension 55) is being concealed by the 60mm wide frame-part.



Material

a) and b)

- **Door- and frame-part:** zinc die, black or chrome plated
- **Pin:** stainless steel
- **Washer:** brass

b1)

- **Door-part:** zinc die, black
- **Frame-part:** steel, black
- **Pin:** stainless steel
- **Washer:** stainless steel

Remarks

(S) Door-thickness up to 4mm

1. washer fixed
2. possible notching in the door for a gap of approx. 1-2mm between door and frame.
3. 180° opening angle if hinges are installed on the right **and** on the left.
4. the max. torque for the door-part screws is 6Nm.

Hinge, frame- and door-part zinc die

Product number	Version	Surface	Frame-part	Pin version	Installation type	Delivery Unit
a) 212-9042.00-00000	RH version	glossy chrome plated	with M6 threaded stubs	pressed in	screw-on	10 pcs.
b) 212-9043.00-00000	RH version	glossy chrome plated	with countersunk holes Ø6.4mm for M6	pressed in	screw-on	10 pcs.
a) 212-9044.00-00000	LH version	glossy chrome plated	with M6 threaded stubs	pressed in	screw-on	10 pcs.
b) 212-9045.00-00000	LH version	glossy chrome plated	with countersunk holes Ø6.4mm for M6	pressed in	screw-on	10 pcs.

	Product number	Version	Surface	Frame-part	Pin version	Installation type	Delivery Unit
a)	212-9046.00-00000	RH version	black	with M6 threaded stubs	pressed in	screw-on	10 pcs.
b)	212-9047.00-00000	RH version	black	with countersunk holes Ø6.4mm for M6	pressed in	screw-on	10 pcs.
a)	212-9048.00-00000	LH version	black	with M6 threaded stubs	pressed in	screw-on	10 pcs.
b)	212-9049.00-00000	LH version	black	with countersunk holes Ø6.4mm for M6	pressed in	screw-on	10 pcs.

Hinge, frame-part steel, door-part zinc die

	Product number	Version	Surface	Frame-part	Pin version	Installation type	Delivery Unit
b1)	212-9082.00-00000	RH version	black	with countersunk holes Ø6.4mm for M6	pressed in	screw-on	10 pcs.
b1)	212-9083.00-00000	LH version	black	with countersunk holes Ø6.4mm for M6	pressed in	screw-on	10 pcs.

