

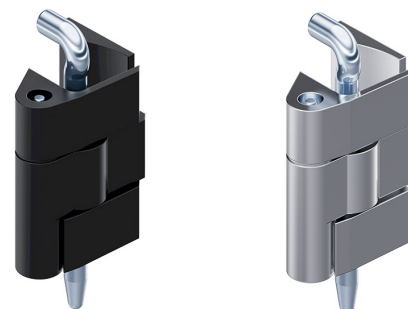
Hinge Pr05 180°

4-180



Advantages

- For surface mounted doors for adjacent cabinets.
- Hinge partly visible.
- With 90° lift-off.
- Door-bending 25mm.
- RH and LH version.
- 180° Opening angle.
- With M6 threaded stubs for fastening from inside or Ø6.4mm countersunk holes for fastening from outside.
- The hinge is designed for an easy fastening to the door.



Material

- **Frame- and door-part:** zinc die, glossy chrome plated or black
- **Pivot pin:** stainless steel
- **Pin:** steel, zinc plated

Remarks

(S) Door-thickness 1.5 - 2.5mm

1. alternative cutouts

Hinges for door-thickness > 2mm see product system 4-183.

This hinge is fully interchangeable with the hinge shown on product system 4-170.

Hinge, zinc die

Product number	Surface	Version	Frame-part	cutout in frame	Pin version	Installation type	Delivery Unit
a) 212-9015.00-00000	black	RH version	with M6 threaded stubs	□8 or Ø10	loose	screw-on	10 pcs.
b) 212-9016.00-00000	black	RH version	with countersunk holes Ø6.4mm for M6	Ø6.4	loose	screw-on	10 pcs.
a) 212-9021.00-00000	glossy chrome plated	RH version	with M6 threaded stubs	□8 or Ø10	loose	screw-on	10 pcs.
b) 212-9022.00-00000	glossy chrome plated	RH version	with countersunk holes Ø6.4mm for M6	Ø6.4	loose	screw-on	10 pcs.

Product number	Surface	Version	Frame-part	cutout in frame	Pin version	Installation type	Delivery Unit
a) 212-9017.00-00000	black	LH version	with M6 threaded stubs	□8 or Ø10	loose	screw-on	10 pcs.
b) 212-9018.00-00000	black	LH version	with countersunk holes Ø6.4mm for M6	Ø6.4	loose	screw-on	10 pcs.
a) 212-9023.00-00000	glossy chrome plated	LH version	with M6 threaded stubs	□8 or Ø10	loose	screw-on	10 pcs.
b) 212-9024.00-00000	glossy chrome plated	LH version	with countersunk holes Ø6.4mm for M6	Ø6.4	loose	screw-on	10 pcs.

