

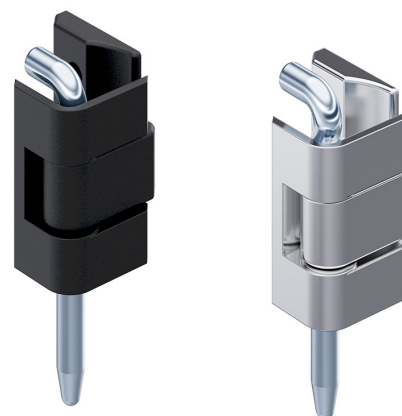
Hinge Pr05 180°

4-170



Advantages

- For surface mounted doors for single cabinets.
- Hinge partly visible.
- Door-bending 25 or 26mm.
- RH / LH application.
- 180° Opening angle.
- With M6 threaded stubs for fastening from inside or Ø6.4mm countersunk holes for fastening from outside.



Material

- **Frame- and door-part:** zinc die, glossy chrome plated or black
- **Pin:** steel, zinc plated or stainless steel

Remarks

Version with pin made of stainless steel or POM on request.

This hinge is fully interchangeable with the hinge shown on product system 4-180.

Hinge

	Product number	Door-thickness (S)	Surface	Bending	Material pin	Frame-part	Pin version	Installation type	Delivery Unit
a)	212-9013.00-00000	1.5 mm - 2 mm	black	25 mm	steel	with M6 threaded stubs	loose	screw-on	10 pcs.
b)	212-9014.00-00000	1.5 mm - 2 mm	black	25 mm	steel	with countersunk holes Ø6.4mm for M6	loose	screw-on	10 pcs.
b)	212-9065.00-00000	1.5 mm - 2 mm	black	25 mm	stainless steel	with countersunk holes Ø6.4mm for M6	loose	screw-on	10 pcs.
a)	212-9019.00-00000	1.5 mm - 2 mm	glossy chrome plated	25 mm	steel	with M6 threaded stubs	loose	screw-on	10 pcs.
b)	212-9020.00-00000	1.5 mm - 2 mm	glossy chrome plated	25 mm	steel	with countersunk holes Ø6.4mm for M6	loose	screw-on	10 pcs.

Product number	Door-thickness (S)	Surface	Bending	Material pin	Frame-part	Pin version	Installation type	Delivery Unit
a) 212-9513.00-00000	2.5 mm - 3.2 mm	black	26 mm	steel	with M6 threaded stubs	loose	screw-on	10 pcs.
b) 212-9514.00-00000	2.5 mm - 3.2 mm	black	26 mm	steel	with countersunk holes Ø6.4mm for M6	loose	screw-on	10 pcs.
a) 212-9519.00-00000	2.5 mm - 3.2 mm	glossy chrome plated	26 mm	steel	with M6 threaded stubs	loose	screw-on	10 pcs.
b) 212-9520.00-00000	2.5 mm - 3.2 mm	glossy chrome plated	26 mm	steel	with countersunk holes Ø6.4mm for M6	loose	screw-on	10 pcs.

