

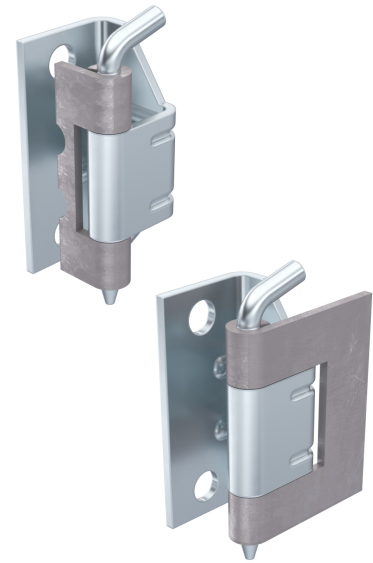
# Concealed Hinge Pr03 120°

4-135



## Advantages

- For surface mounted doors.
- Hinge concealed.
- Door bending 23mm.
- RH and LH application.
- 120° Opening angle.
- Two different fastenings on the door.
- Frame-part: screw-on e.g. cross recessed raised cheese head screw M6 DIN-EN-ISO 7045.



## Material

- **Door-part:** steel, untreated
- **Frame-part and pin:** steel, zinc plated

## Remarks

- door-part to be **weld-on** on the **door leaf**
- door-part to be **weld-on** on the **door bending**

## Concealed hinge

	Product number	Pin version	Installation type	Delivery Unit
a)	216-9008.00-00000	loose	screw- / weld-on	10 pcs.
b)	216-9013.00-00000	loose	screw- / weld-on	10 pcs.

