

Dual-Key Cylinder Swinghandle RS 130, RC2

2-126.02



Advantages

- Dual-key cylinder swinghandle with pivotable operating lever.
- Can be opened with either of the two key cylinders. Accepts 40 and 45mm profile cylinders.
- The handle can be locked without using a key.
- Complies with security test to DIN EN 1630 RC2.
Only in combination with profile cylinders according to DIN 18252.
- IP65 according to DIN EN 60529.
- Including steel insert (saw protection).
- Logo (1.) on handle on request.
- RH/LH application.

Material

- **Swinghandle and dish:** zinc die, ZL 0430, black
- **Other surfaces on request!**

Remarks

(S) Door-thickness 3mm - max. 6mm

Drawings for rod calculation (see accessories):

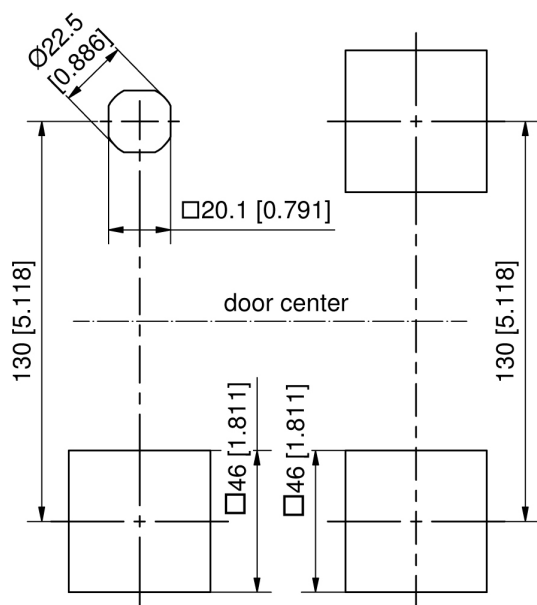
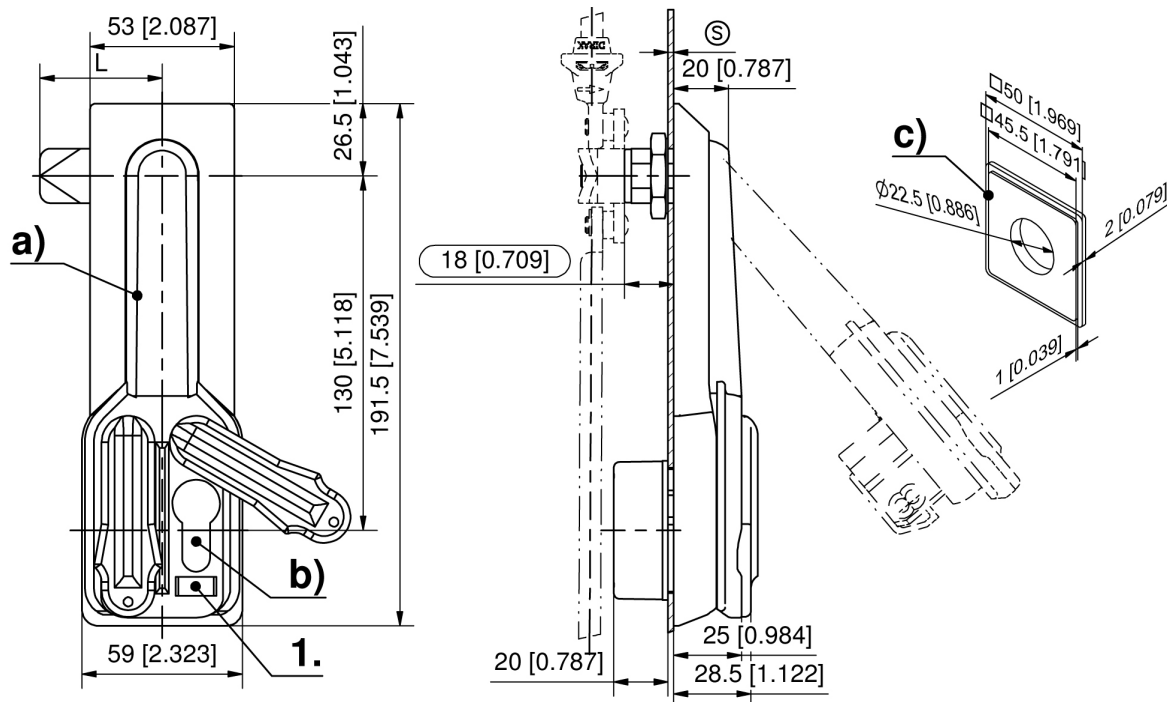
1. stroke 18mm
2. clearance

To use the same door both RH and LH, 2 holes $\square 46$, symmetrical to door center are possible.

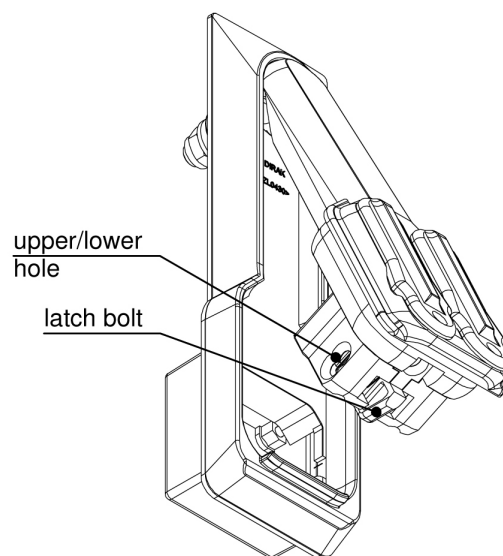
Profile half cylinders and their assembly must be ordered separately.

Dual-key cylinder swinghandle, RC2 tested

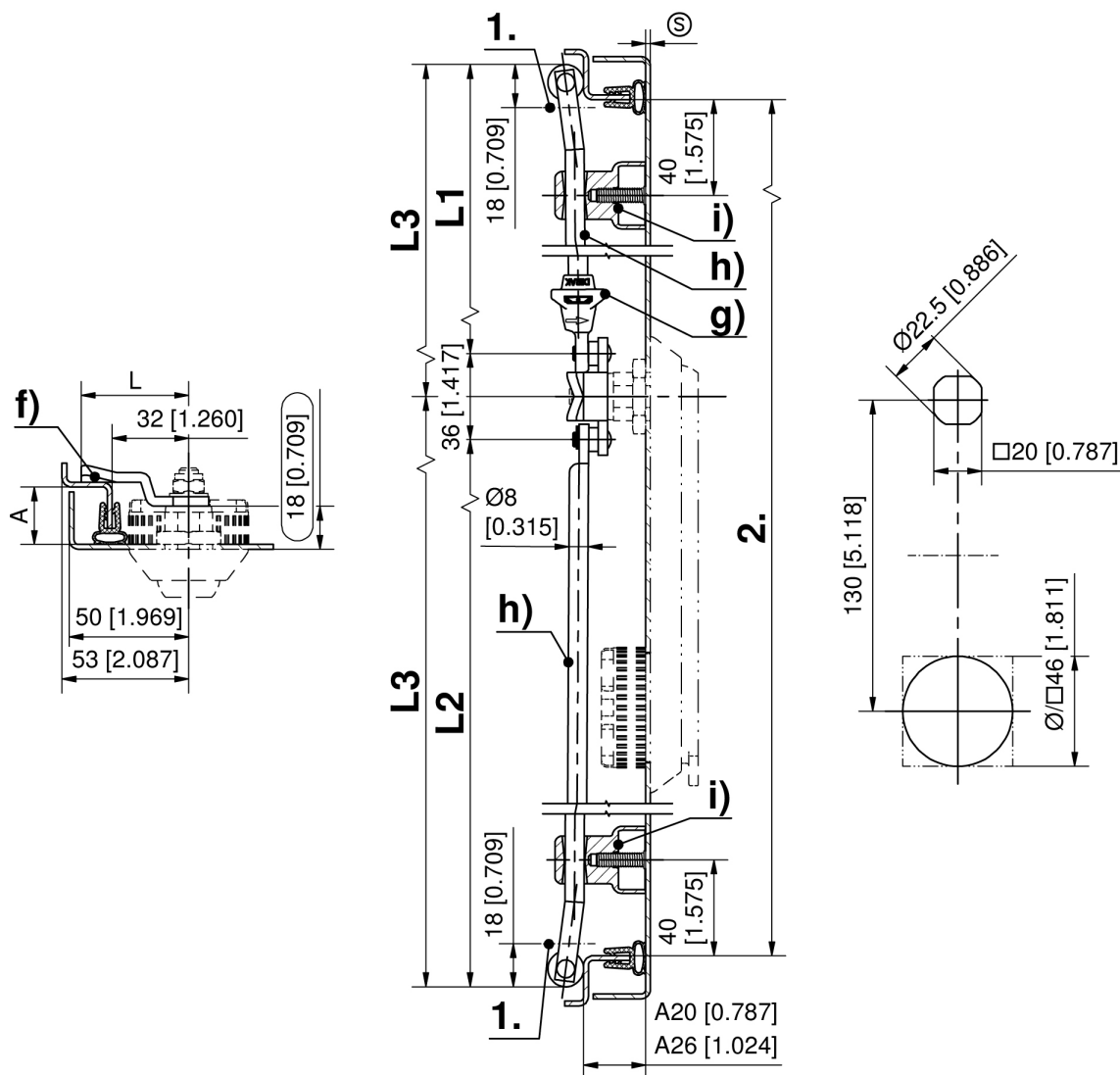
	Product number	Internal cover	Cylinder cover material	Securable	Installation type	Delivery Unit
a)	207-9414.00-00000	$\square 46$	zinc die	Yes	screw-on	1 pc.



To use the same door both RH and LH, 2 holes $\square 46$, symmetrical to door center, are possible, see h) and h1).



upper hole for profile cylinder 40mm [1.575],
upper hole for profile cylinder 45mm [1.772].



Formula for rods with eye and rollers:
cutout in the door center (rod length varies)

$$L1 = \frac{\text{upper rod}}{2} \cdot \frac{2 \cdot \text{clearance} - 12 \text{ mm} [0.472]}{[0.079]} - 65 \text{ mm} [2.559] \quad L2 = \frac{\text{lower rod}}{2} \cdot \frac{2 \cdot \text{clearance} - 12 \text{ mm} [0.472]}{[0.079]} + 65 \text{ mm} [2.559]$$

cutout outside the door center (rod length equal)

$$L3 = \frac{2 \cdot \text{clearance} - 12\text{mm}[0.472]}{2[0.079]}$$