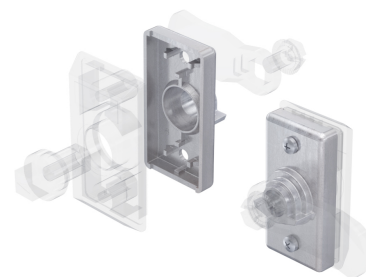


Quarter-Turn PrA L16

2-040



Advantages

- For cutout type A 50 x 25.
- IP65 according to DIN EN 60529 by sealing kit (optional).
- RH/ LH application.
- Grounding by grounding clip (optional).
- Pre-assembled deliverable on request.
- The quarter-turn can be installed pre-assembled.
- Pre-assembly of 3-point cam also possible.

Material

- **Bearing plate:** zinc die, untreated
- **Escutcheons:** PA, black
- **Self tapping screw:** steel, zinc plated

Remarks

Height 16mm.

Min. A dimension = 8mm.

Escutcheon b2) only in use with insert double bit.

For door-thicknesses greater than 3.5mm longer screws for the installation are required.

Please configure the quarter-turn with insert and cam.

Bearing plate and escutcheons

	Product number	Name	Material	Surface	Door-thickness (S)	Installation type	Delivery Unit
a)	207-2707.00-00016	Bearing plate 16mm	zinc die	untreated	-	screw-on	10 pcs.
b)	208-9306.00-00000	Escutcheon PrA	PA	black	1.3 mm - 3.5 mm	screw-on	1 pc.
b1)	208-9307.00-00000	Escutcheon PrA SOFTLINE	PA	black	1.3 mm - 3.5 mm	screw-on	1 pc.

	Product number	Name	Material	Surface	Door-thickness (S)	Installation type	Delivery Unit
b2)	208-9308.00-00000	Escutcheon for double bit PrA	PA	black	1.3 mm - 3.5 mm	screw-on	1 pc.

