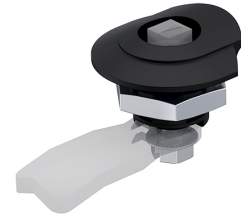


Quarter-Turn SOFTLINE Pr20.1 L18

1-107



Advantages

- For cutout Pr20.1.
- With integrated finger pull.
- IP65/67 according to DIN EN (optional).
- RH / LH application by rotatable bottom part.
- Grounding by grounding clip.
- On request parts can be assembled.
- The quarter-turn can be screwed into the cutout with the pre-assembled cam.

Material

- **Housing:** PA6, black
- **Bottom:** zinc die, zinc plated

Remarks

(S) Door-thickness max. 8mm

Please configure the Quarter-turn with insert and cam.

Note: wing or star knob not usable.

1. rotatable bottom

Quarter-Turn housing

	Product number	Housing length	Grounding type	Installation type	Delivery Unit
a)	100-9007.00-00000	18 mm	-	screw-on	10 pcs.
b)	100-9008.00-00000	18 mm	Grounding clip	screw-on	10 pcs.

