

Compression Latch Pr20.1

1-081



Advantages

- Compression 6.5mm.
- By turning the insert 90° the cam is at first put into closed position, by turning a further 90°, the cam will be pulled towards the frame.
- Matching dots mark the final position (see lower drawing).
- Vibration-proof according to DIN EN 61373.
- IP65 according to DIN EN 60529.
- Grounding by grounding nut.
- RH and LH version.



Material

- **Housing:** zinc die, chrome plated or black
- **Insert:** brass, chrome plated, zinc die, black or chrome plated
- **Drip handle:** zinc die, black
- **Spring:** stainless steel
- **Cam:** zinc die, chrome plated
- **Adjusting screw and nut:** steel, zinc plated

Remarks

(S) Door-thickness max. 22mm

Please configure the quarter-turn with insert and cam as well as corresponding assembly.
The H-dimension can be adjusted by the adjusting screw.

1. compression 6.5mm
2. flat external seal
3. adjusting screw

Compression Latch, version RH, closing left

| | Product number | Surface | Grounding type | Installation type | Delivery Unit |
|----|-------------------|---------------|----------------|-------------------|---------------|
| a) | 100-9001.00-00000 | chrome plated | - | screw-on | 1 pc. |
| a) | 100-9002.00-00000 | chrome plated | Grounding nut | screw-on | 1 pc. |
| a) | 100-9014.00-00000 | black | Grounding nut | screw-on | 1 pc. |

Compression Latch, version LH, closing right

| | Product number | Surface | Grounding type | Installation type | Delivery Unit |
|----|-------------------|---------------|----------------|-------------------|---------------|
| a) | 100-9013.00-00000 | chrome plated | Grounding nut | screw-on | 1 pc. |
| a) | 100-9015.00-00000 | black | Grounding nut | screw-on | 1 pc. |

Inserts

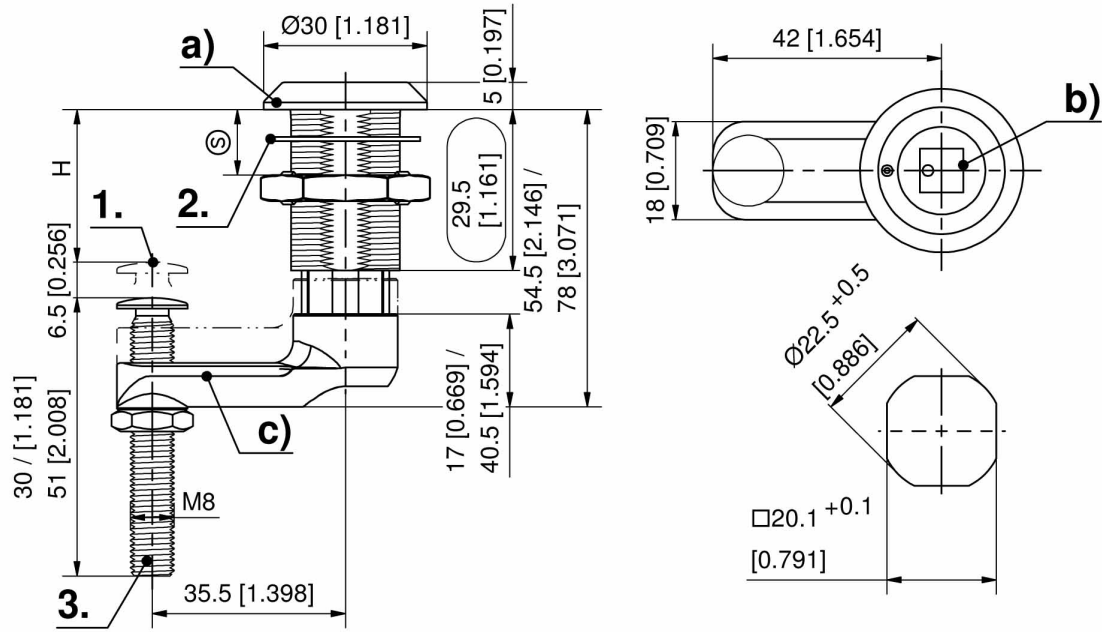
| | Product number | Surface | Insert | Version | Delivery Unit |
|----|-------------------|---------------|-------------------------|-----------------------------|---------------|
| b) | 100-9104.00-00000 | chrome plated | Square 7mm | - | 1 pc. |
| b) | 100-9105.00-00000 | chrome plated | Square 8mm | - | 1 pc. |
| b) | 100-9106.00-00000 | chrome plated | Triangular 7mm | - | 1 pc. |
| b) | 100-9107.00-00000 | chrome plated | Triangular 8mm | - | 1 pc. |
| b) | 100-9103.00-00000 | chrome plated | Double bit 3mm pin | - | 1 pc. |
| b) | 100-9102.00-00000 | chrome plated | Double bit 5mm pin | - | 1 pc. |
| b) | 100-9114.00-00000 | chrome plated | Socket hex. 8mm (5/16") | - | 1 pc. |
| b) | 100-9123.00-00000 | black | Socket hex. 8mm (5/16") | - | 1 pc. |
| b) | 100-9101.00-00000 | chrome plated | Socket hex. 10mm | - | 1 pc. |
| b) | 100-9132.00-00000 | chrome plated | Hex. 7/16" | - | 1 pc. |
| b) | 100-9109.00-00000 | chrome plated | Slotted 2x4mm | - | 1 pc. |
| b) | 100-9110.00-00000 | black | Drop handle | cam in line with the handle | 1 pc. |
| b) | 100-9111.00-00000 | black | Drop handle | cam 90° to the handle | 1 pc. |

Cams, version RH

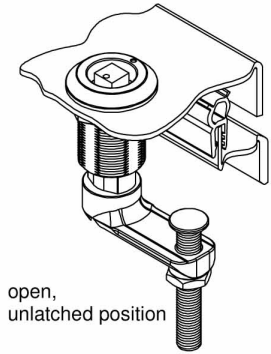
| | Product number | variable H-dimension | Hight of cam | Version | Delivery Unit |
|----|-------------------|----------------------|--------------|-----------------------|---------------|
| c) | 200-9611.00-00000 | 0 mm - 37 mm | 17 mm | Adjustable screw 51mm | 1 pc. |
| c) | 200-9610.00-00000 | 21 mm - 34 mm | 17 mm | Adjustable screw 30mm | 1 pc. |
| c) | 200-9613.00-00000 | 24 mm - 60 mm | 40,5 mm | Adjustable screw 51mm | 1 pc. |
| c) | 200-9612.00-00000 | 45 mm - 60 mm | 40,5 mm | Adjustable screw 30mm | 1 pc. |

Cams, version LH

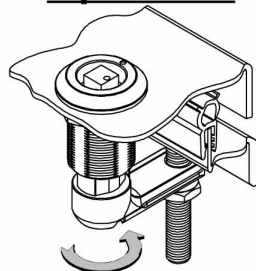
| | Product number | variable H-dimension | Hight of cam | Version | Delivery Unit |
|----|-------------------|----------------------|--------------|-----------------------|---------------|
| c) | 200-9618.00-00000 | 21 mm - 34 mm | 17 mm | Adjustable screw 30mm | 1 pc. |
| c) | 200-9614.00-00000 | 0 mm - 37 mm | 17 mm | Adjustable screw 51mm | 1 pc. |



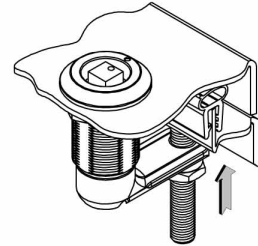
Operation



open,
unlatched position



First 90° rotation: the cam latches behind the frame into the locked position. The door cannot be opened.



A further 90° rotation will pull the already latched cam towards the frame around 6.5mm [0.256]: the seal is compressed, the door is latched and free of play.